

FIRMWARE UPDATE MANUAL

Compatible models: SRP-GT · SRP-GTI · SRP-F1 · SRP-HB

Important

The firmware is usually updated **automatically** when you run the new version of the software. This manual procedure **is only necessary** in the following cases:

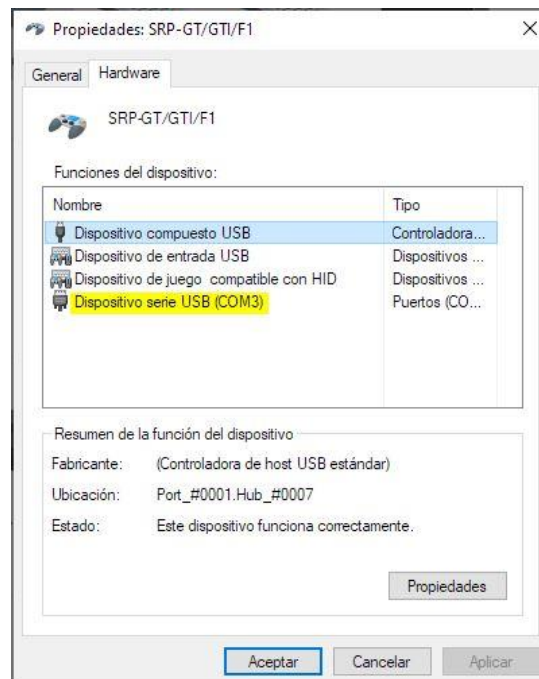
- If you are using a very old version of software (V1 or V2).
 - If due to a problem with Windows, the automatic update does not work.
-

Steps for manual update

1. Identify the device's port

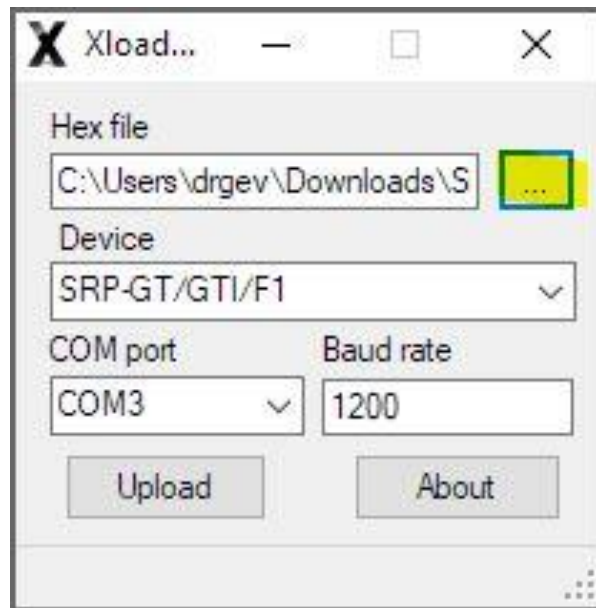
1. Open the menu: **Control Panel → Devices & Printers.**
2. Right-click on your device (SRP-GT/GTI/F1 or SRP-HB) and go to **Properties.**
3. Check which COM port you are using (example: **COM3**).

 The port number may vary depending on your computer and hardware.

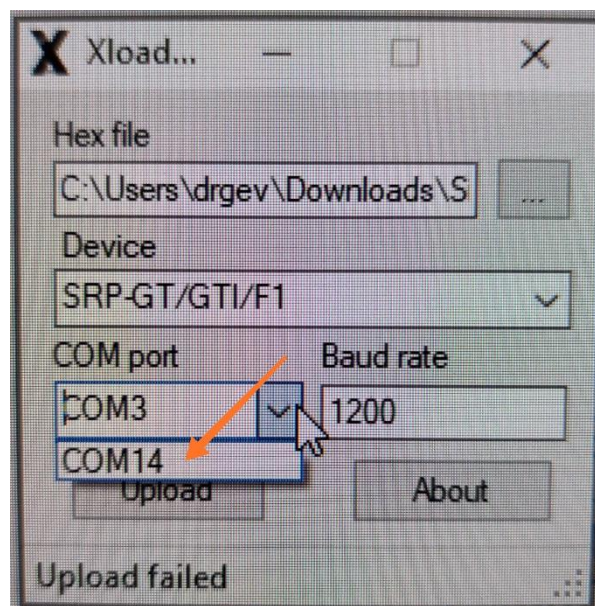


2. Run XLoader

1. Open the **XLoader app**, which is included in the firmware folder.
2. In the **Hex file** field, select the firmware file with a **.hex** extension (located in the firmware folder).

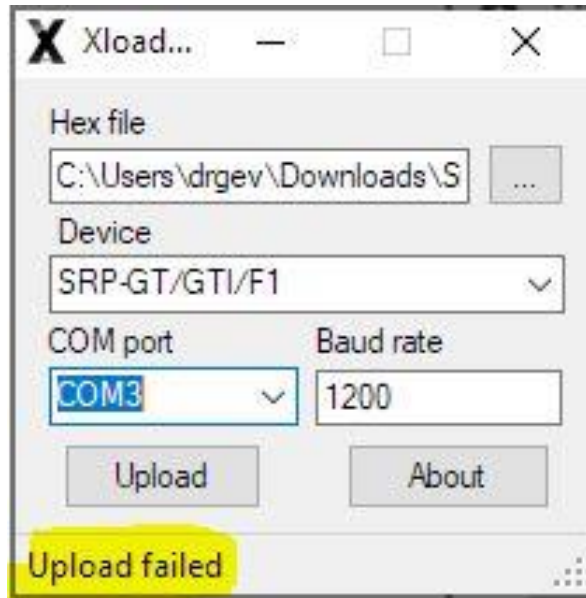


3. Expand the list of **available COM ports** on your PC.
 - If you have several, write them down so you don't confuse them.



3. Upload the firmware

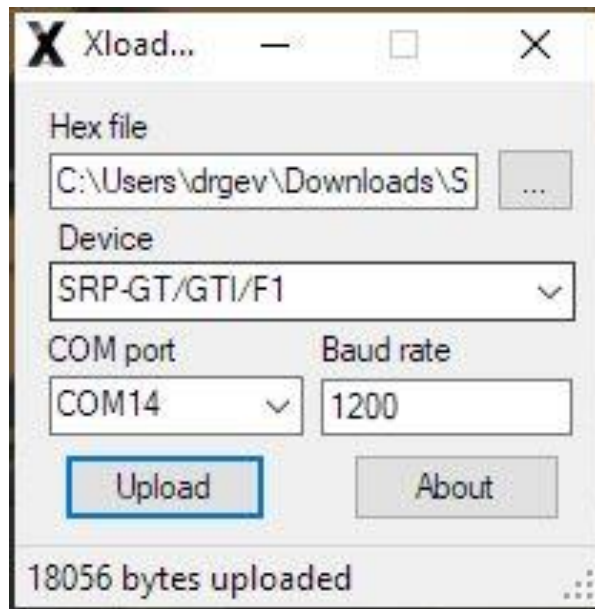
1. Select the port on your pedals or parking brake and press **Upload**.
 - At this point, the message: "**Upload failed**" will appear.



2. At that point, you have **4 seconds** to reopen the port list.
3. You'll see a **new port** that wasn't listed before.
4. Select the new port and press **Upload again**.

4. Confirmation

- If the upload is successful, you'll see the message:
"**..... bytes uploaded**"
- The number of bytes may vary depending on the firmware version.



- Close **XLoader**.
- Open the **SRP-MS** or **SRP-HB app** and verify that it is working properly.

Technical support

If you have any questions, please contact us:

 support@simracing-pro.com