



[WWW.SIMRACING-PRO.COM](http://WWW.SIMRACING-PRO.COM)



ENGLISH



## TABLE OF CONTENTS

1. GENERAL INFORMATION .....	3
1.1. Preliminary warnings .....	3
1.2 Manufacturer's address:.....	3
1.3. Technical Service Address .....	3
2. DESCRIPTION OF THE PEDALS. ....	4
2.1. General description .....	4
2.2. List of parts supplied.....	4
2.3. Working principle .....	4
2.4. Intended use .....	5
2.5. Predictable working conditions .....	5
2.6. Control panel .....	5
2.7. Identification and signalling .....	5
3. WARNINGS AND SAFETY INSTRUCTIONS .....	6
3.1. Protection and safeguards.....	6
4. STORAGE AND TRANSPORT .....	6
4.2. Weight and dimensions .....	6
4.3. Storage.....	6
4.4. Transport and handling .....	7
5. LOCATION .....	7
5.1. Unpacking .....	8
5.2. Site preparation .....	8
5.3. Assembly.....	8
5.4. Electrical connection .....	8
6. REVIEWS BEFORE STARTING.....	9
6.1. Fastening.....	9
6.2. Review with the pedals connected .....	9
7. INSTRUCTIONS FOR USE .....	10
7.1. Pre-inspection and adjustments.....	10
7.2. Uses of the controls.....	10
7.3. CONTROL SETTINGS.....	10
7.4 - Download and use of the application. ....	14
8. MAINTENANCE .....	14
8.1. General cleaning .....	14

8.2. Replacement of elements.....	14
9. ATTACHMENTS .....	15
9.1. Plan of general measures: .....	15
10. DECLARATION OF CONFORMITY .....	16
11. "CE" BRANDING .....	17
12. WARRANTY .....	17
13. RECEIPT OF TECHNICAL DOCUMENTATION .....	17

## **1. GENERAL INFORMATION**

### **1.1. Preliminary warnings**

Be sure to observe the safety and warning notes in this manual when using the pedals.

It is essential that you follow these instructions for the pedals for issue-free operation and to be able to file a claim under the warranty.

The pedals must be used for the purpose for which they were built. Any other use is considered dangerous. Any liability of the manufacturer for damage that may be caused by non-compliance with the instructions in the manual is excluded.

This manual contains important information about the operation of the pedals. For this reason it should always be kept within reach of the user.

### **1.2 Manufacturer's address:**

Sim Racing Pro 2018 S.L

Carretera de Tordera, 89

17300 Blanes (Girona)

Spain

Tel + 34 627 639 716

[info@simracing-pro.com](mailto:info@simracing-pro.com)

### **1.3. Technical Service Address**

Sim Racing Pro 2018 S.L

Carretera de Tordera, 89

17300 Blanes (Girona)

Spain

Tel + 34 627 639 716

[support@simracing-pro.com](mailto:support@simracing-pro.com)

## **2. DESCRIPTION OF THE PEDALS.**

### **2.1. General description**

This technical manual contains all the necessary instructions for the installation, commissioning, maintenance and use of the pedals.

#### **Parts of the pedals:**

One Base, 3 pistons, set of three pedals, accelerator, brake and clutch.

Electrical power supply of the machine:

- . Power and electricity consumption: 5 volts USB-C
- . Model: Sim Racing Pro
- . Total Power: 225mW
- . Total consumption: 45mAh
- . **NOTE:** These consumptions are always approximate since they depend on the performance of each element.

### **2.2. List of parts supplied.**

1. set of pedals
2. Optional 9 kg spring for initial braking.
3. 1 pc Allen key n°3
4. 1 pc Allen key n°4
5. 1 pc Allen key n°5
6. 1 pc. 10 mm open-end wrench
7. 1 pc open end wrench 13 mm
8. 1 x 2m USB cable / USB-C to USB-A
9. 1 user manual / CE certificate
10. 1 Warranty form

### **2.3. Working principle**

The SRP GT 3p/2p pedals

They have the following functions:

Driving Simulation

## 2.4. Intended use

Driving simulation when playing PC car racing games.

**Do not carry out activities other than those for which the pedals are designed with elements other than those indicated here.**

**The manufacturer of the pedals declines all responsibility for failure to comply with this warning. Do not exceed the working capacity of the pedals.**

## 2.5. Predictable working conditions

People over 6 years old may use the pedals.

The fastening of the pedals is essential for their proper functioning.

**The correct use of the pedals and their maintenance implies their longevity.**

## 2.6. Control panel

See point 7.3

## 2.7. Identification and signalling

Signal symbols that can be found on the pedals:



### **DANGER! Electrical risk**

Electrical risk in electrical panel and indicated areas.

**Note: The user must ensure that all the identification signs and warning plates on the pedals are maintained and preserved**

**Under no circumstances should they be dismantled or altered.**

### 3. WARNINGS AND SAFETY INSTRUCTIONS

#### 3.1. Protection and safeguards

The materials used in the manufacture of the pedals do not give rise to any hygienic risks, although in the event of fire the plastic components and lubricants may give rise to toxic fumes.

Do not carry out any maintenance or cleaning operations on the pedals or the pavement in the vicinity without first disconnecting the USB from the P

### 4. STORAGE AND TRANSPORT

#### 4.1. Reception of the pedals.

1. Check whether the pedals have been damaged during transport.

#### 4.2. Weight and dimensions

Model	Length, mm.	Width, mm.	Height, mm.	Weight, Kg.
SRP GT 3P	441	347	245	8.1 KG
SRP GT 2P	441	347	245	7,4 KG

See general dimensional drawing 9.1.

#### 4.3. Storage

No particular measures are recommended with regard to storage. If the user leaves it unused for a long time, it is recommended to protect it from dust by covering it properly and disconnecting it from any power source beforehand.



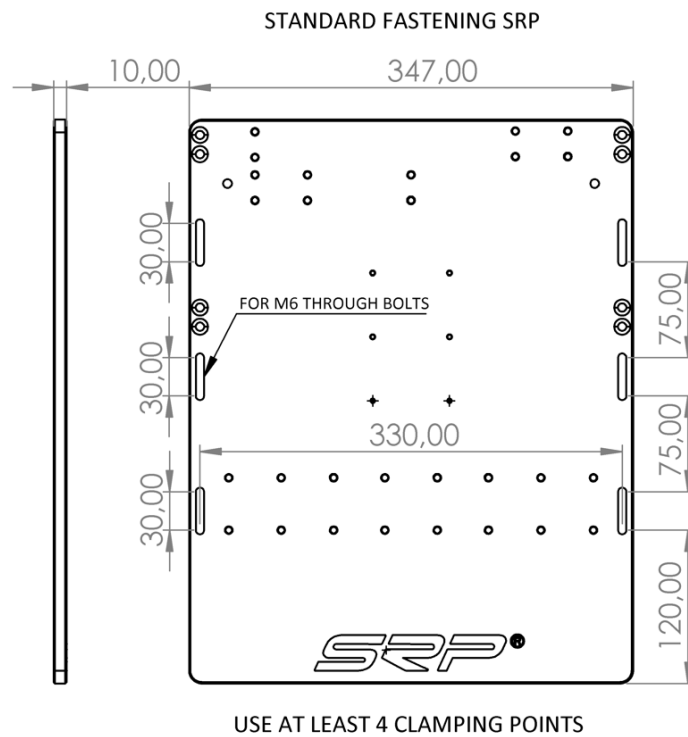
#### 4.4. Transport and handling

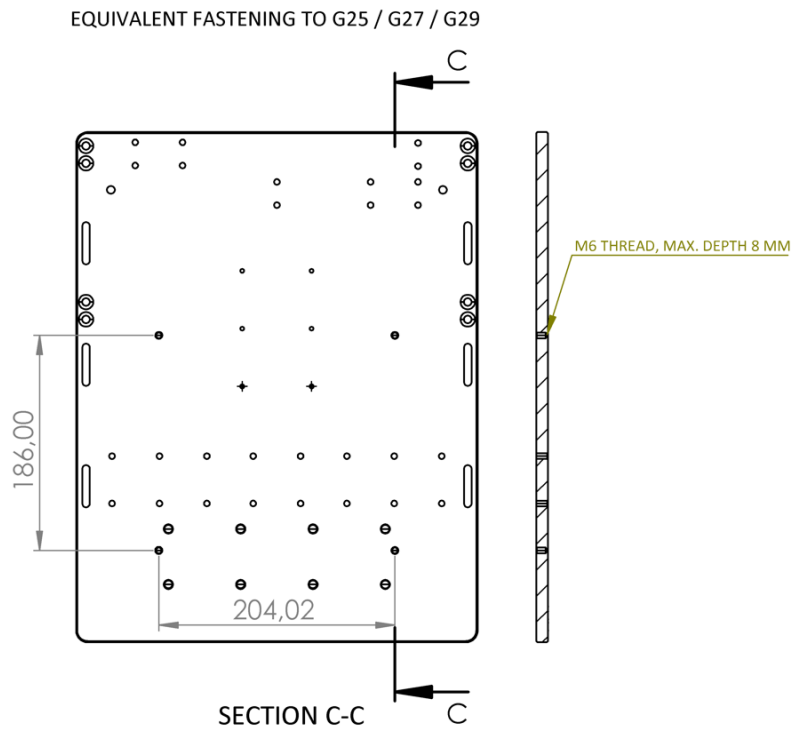
If the pedals have to be transported to another location, make sure that the instruction and maintenance manual is with the pedals so that it can be consulted at the new location.

The total weight of it must be taken into account.

#### 5. LOCATION

The pedals have been designed and are built expecting their assembly.





### 5.1. Unpacking

After transport and unloading, with the pedals in the vicinity of the intended assembly site, unpacking should be carried out with the utmost care and attention.

The pedals should not be installed if any damage is observed during unpacking. In case of questions, do not use the product and ask the supplier for information.

### 5.2. Site preparation

The surface on which the machine is to be installed must take account of the weight of the pedals, as indicated in section 4.1 above.

**It is recommended that it be placed on a metal frame where it can be fixed correctly.** It can also be placed directly on the floor on a carpet or rubber surface.

### 5.3. Assembly

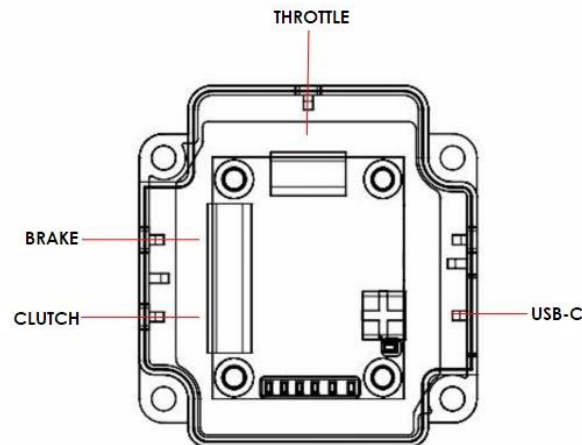
**5. Once the machine is located and level in the place where you will work on it, it can be installed and connected.**

### 5.4. Electrical connection

-The electrical connection of the pedals is 5V via USB. As indicated in the data sheet, or in the general dimensional and connection drawing.

- The pedals require a stable, standardised supply voltage that is between the operating ranges of the pedals for proper operation. Faulty power supply to the pedals can lead to malfunction and even serious damage or deterioration of installed electrical components.

**Make sure that the electric cables connecting the pedals are not left in areas where they can hinder other users and that they are properly protected.**



## 6. REVIEWS BEFORE STARTING

### 6.1. Fastening

Check that the pedals have been levelled out correctly, as described in section 5.3.

### 6.2. Review with the pedals connected



**POWER:** Red Led indicating that the plate is powered by USB.  
**WARNING:** Orange LED failure indicator.  
**INI-OK:** Green LED, indicating that there is data communication with the PC.  
**THROTTLE:** Blue Led, throttle piston status ok.  
**BRAKE:** Blue Led, brake piston status ok.  
**CLUTCH:** Blue Led, throttle-piston status ok.  
**BRAKE REGULATOR:** Led Blue, Brake adjustment activated.

## 7. INSTRUCTIONS FOR USE

### 7.1. Pre-inspection and adjustments

- Before starting the machine, check that the pedals are connected correctly.
- Check the status of the LED indicators to determine that everything is correct. See point 6.2

### 7.2. Uses of the controls

The pedals have two/three pedals, depending on the model.

An accelerator

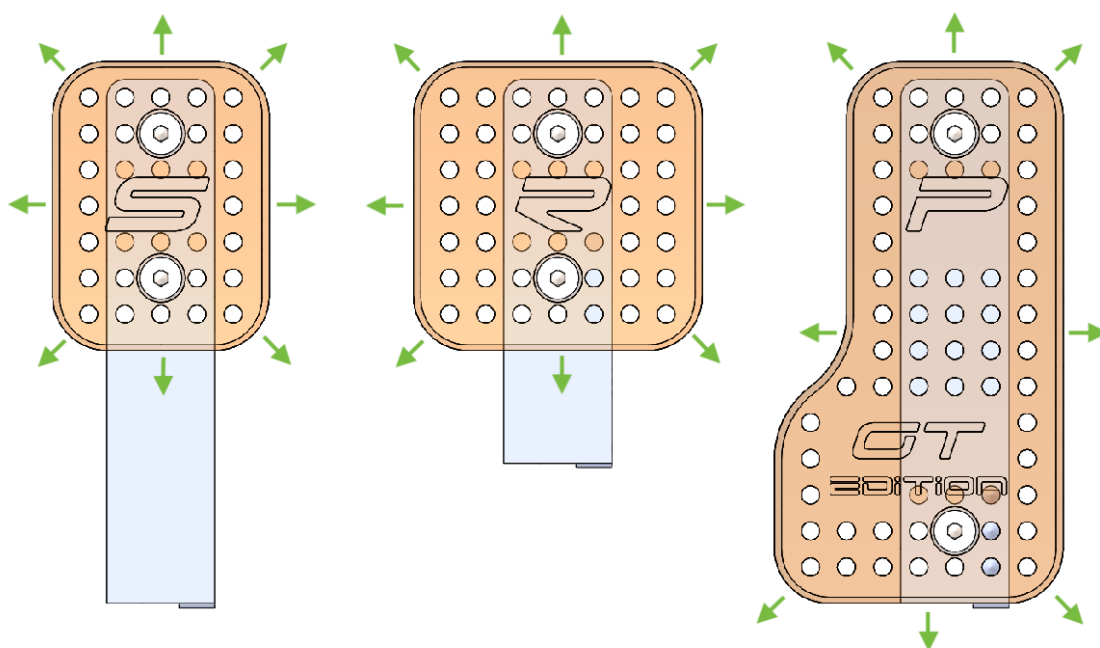
A Brake

A Clutch

### 7.3. CONTROL STINGS.

#### Key adjustment.

There are 9 positions for the keys. Unscrew the two Allen screws to move them (see attached drawing).



### CAM ANGLE ADJUSTMENT:

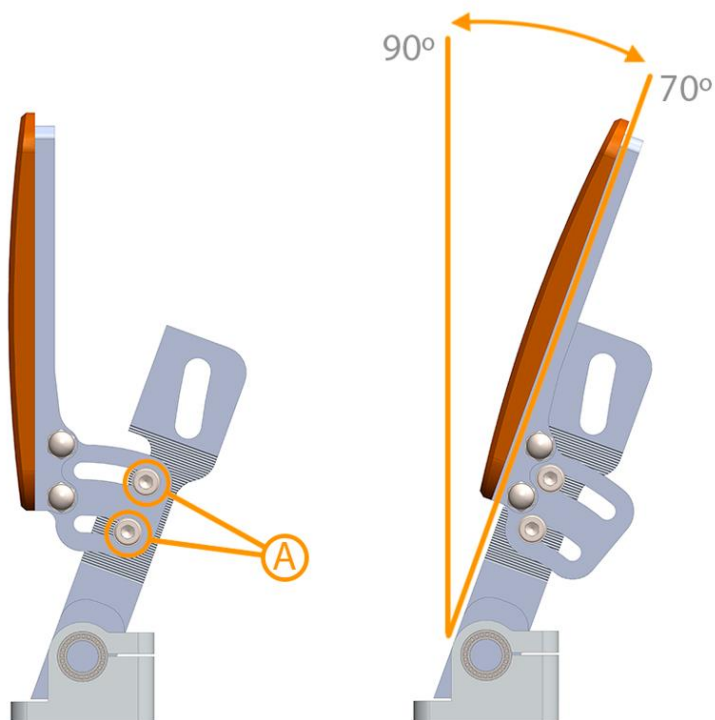
By unscrewing the two screws A (see enclosed drawing) the cams can be adjusted in the range of 70° to 90°

Recommendations:

70° seat position in GT

90° seat position at Formula (lying down)

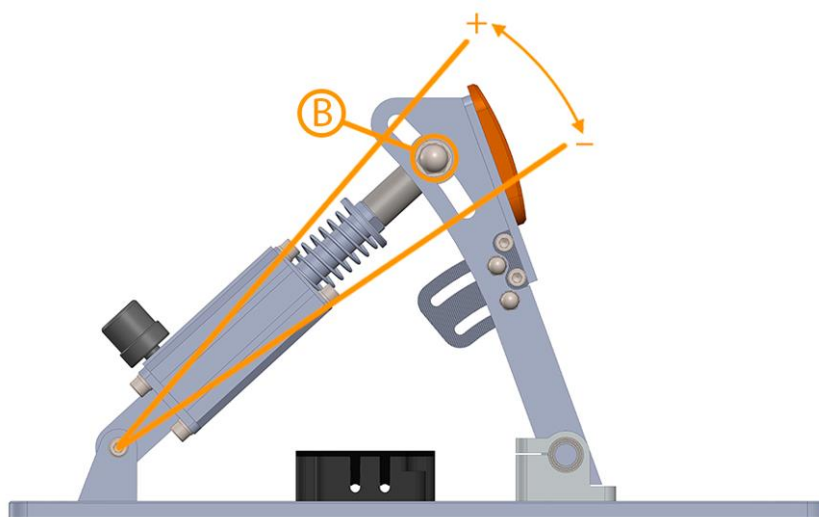
Applicable to the three cams accelerator, brake and clutch.



### FIRMNESS ADJUSTMENT:

Loosen screw B (see drawing below) to raise the piston for more firmness and to lower it for less firmness.

Applicable to all three pistons equally: accelerator, brake and clutch.



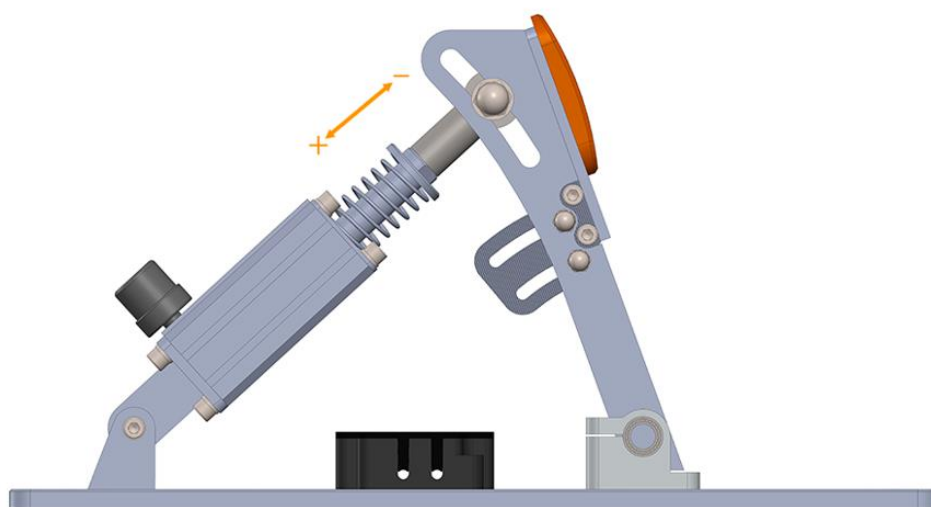
### BRAKE TRAVEL ADJUSTMEN

See the following video:

SRP-GT/F1 PEDALS - ADJUSTING THE BRAKE TRAVEL

On the YouTube channel: SRP SimRacing-Pro

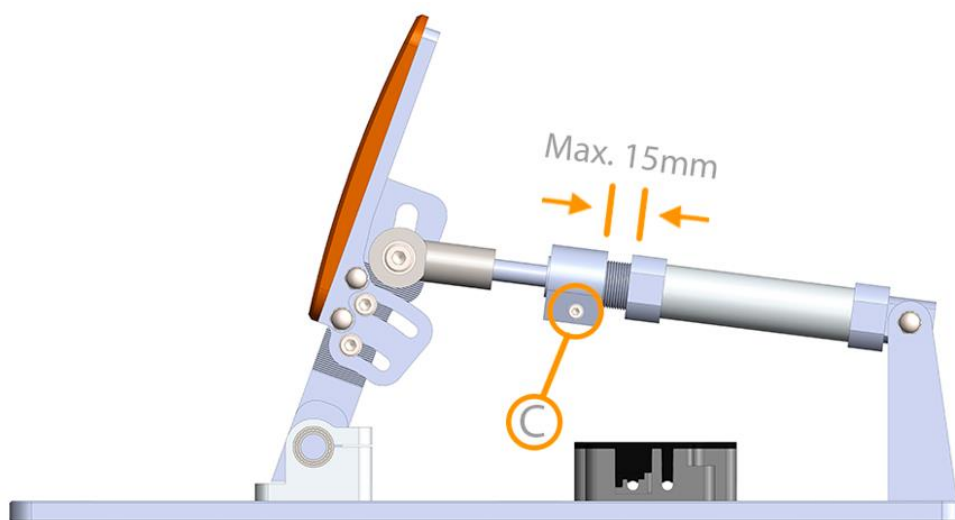
Direct link: <https://youtu.be/vQphgbAFBIA>



### THROTTLE TRAVEL ADJUSTMENT.

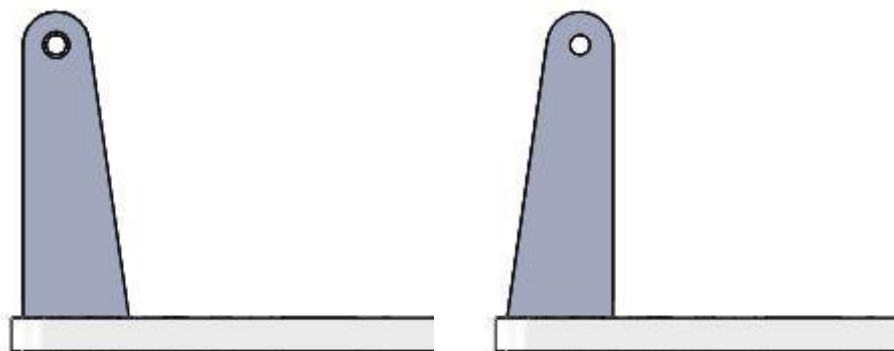
By loosening the hexagon socket screw C (see enclosed drawing), unscrewing part D shortens the route. **Unscrew a max. of 15 mm**

The pedal is supplied at a maximum route.



### CLUTCH TRAVEL ADJUSTMENT.

Two configurations for the clutch, the long travel of 4.5 cm and by rotating the piston bracket 180° the short travel of 2.25 cm.



**Long haul**

**Short haul**

## 7.4 - Download and use of the application.

Download the application in the download area of the website [simracing-pro.com](http://simracing-pro.com)

Execute and follow the steps of the application for a good configuration.



## 8. MAINTENANCE

### 8.1. General cleaning

#### Introduction

It is advisable that you dust the machine periodically.

**DO NOT** use cleaning fluids in the area of the plate, as this could cause damage to the machine.

Remember that by keeping the machine in an optimum state of cleanliness and maintenance, its performance will be better and it will last longer.

### 8.2. Replacement of elements

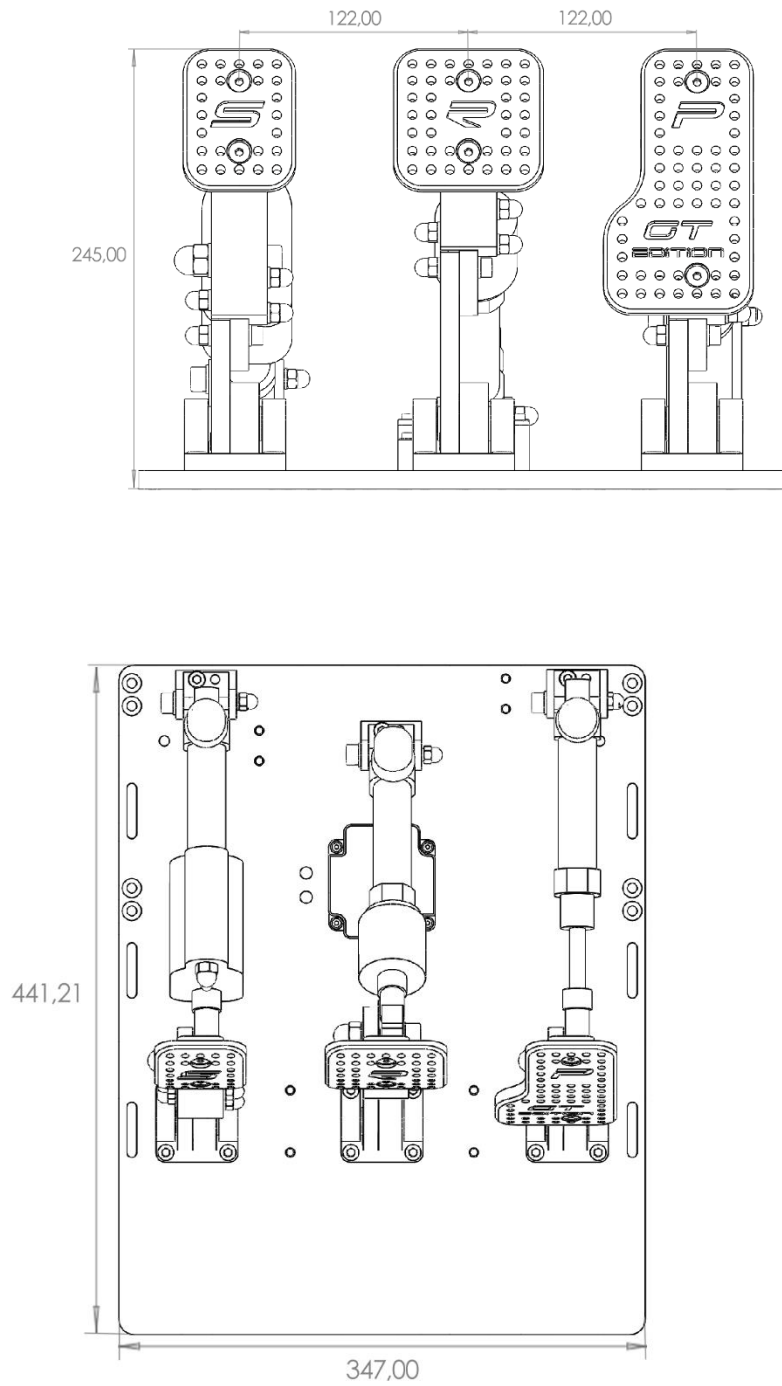
The replacement of any element must be done by the technical service or by remote connection with the technical service

**Any maintenance or cleaning operations to be carried out on or near the machine must be carried out after disconnecting the power supply.**



## 9. ATTACHMENTS

### 9.1. Plan of general measures:



## 10. DECLARATION OF CONFORMITY

### Declaración de conformidad

Empresa: **Sim Racing-Pro S.L.**  
**Carretera de Tordera nº 89**  
**17300 BLANES (Girona)**

Producto: **Pedales de Simulación**

Modelo:

N.º Serie:

Año de fabricación:

En conformidad con la siguiente normativa:

**2006/42/CE Directiva de Maquinas**

**2006/42/CE Directiva relativa a las máquinas.**

**2006/95/CE Directiva de baja tensión.**

**2004/108/CE Directiva de compatibilidad electromagnética.**

**Declaramos que la maquina indicada cumple con los requisitos esenciales de seguridad y salud de la Directiva de máquinas de la Comunidad Europea**

**Esta Declaración de Conformidad perderá toda su validez, en caso de una modificación de la maquina no acordada o no autorizada por cualquier persona no perteneciente al Servicio Técnico de Sim Racing- Pro S.L**

**Blanes, 1 de Julio de 2020**



**Sra; Leidy Quintero**

**REPRESENTANTE LEGAL  
SIM RACING-PRO 2018 S.L**

## **11. "CE" BRANDING**

The plate is stamped with the manufacturer's brand, the CE conformity brand and the manufacturer's social information. On the top of the plate, the specific data of the pedals is specified: brand, model, serial number and year of manufacture. The last box contains the essential technical data of the pedals: the voltage,

## **12. WARRANTY**

The company SIM RACING PRO 2018, SL, is committed to ensuring the proper functioning of the pedals and the replacement of the elements that compose it due to a manufacturing defect.

This warranty will be effective as long as the normal operation of the pedals has not been distorted or varied and the faulty element has NOT BEEN MISHANDLED OR MANIPULATED.

Warranty: 2 years from date of billing, except for electrical components and parts subject to normal wear and tear.

## **13. RECEIPT OF TECHNICAL DOCUMENTATION**

List of documentation delivered:

Paper support :

- Instruction Manual
- CE Declaration of Conformity (included in the manual)
- Warranty sheet (included in the manual)